

Feature

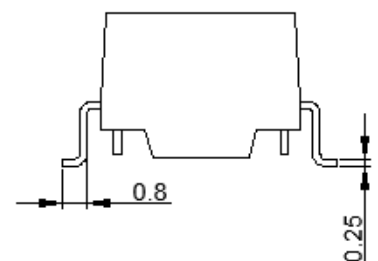
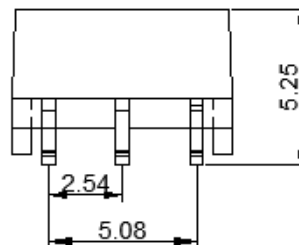
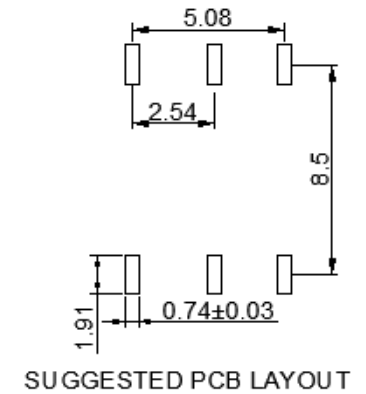
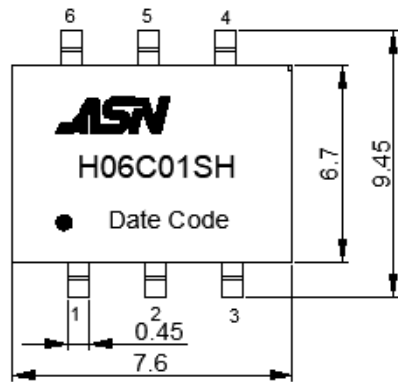
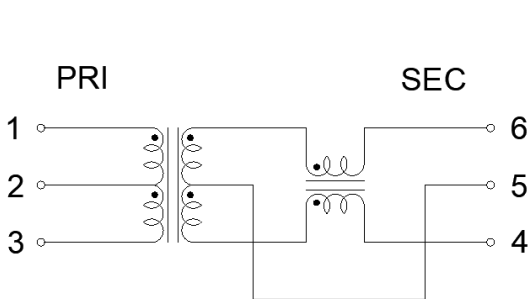
- Comply with RoHS requirements.
- Operating temperature range: -40°C to +125°C.
- Storage temperature range: -40°C to +125°C.

Electrical Specifications @ 25°C

OCL:	Pri: 150uH Min. @100KHz/0.1V
Hi-Pot :	4730VDC 0.5mA 2Sec
Turns Ratio:	1CT:1CT±2%
LK:	Pri: 0.5uH Max @100KHz/0.1V
DCR:	Pri : 0.55ohm Max
	Sec : 0.85ohm Max
CWW:	28pF Max
Insertion Loss:	4MHz: -0.25dB Max
Return Loss:	4MHz: -20dB Min
CMRR:	1-10MHz: -35dB Min
	10-100MHz: -20dB Min

Schematic

Mechanical



Unless otherwise specified, all tolerances are ±0.25mm